

# JOSHUA CREEK MONTAGE

## 1361 LOON LANE LOT 121

**BED 4** **BATH 4.5**

**SQ. FT 3047+1036**

**PRICE \$1,999,990**

**JC-38-05 A  
FINISHED BASEMENT**

- Wide plank hardwood throughout main floor
- Modern white kitchen with black hardware and upgraded faucet
- Spa-like ensuite with glass shower, double vanity
- Finished basement with high ceilings, large windows, and large recreational space
- Wrought iron pickets on staircase
- 12 ft Ceilings on ground floor

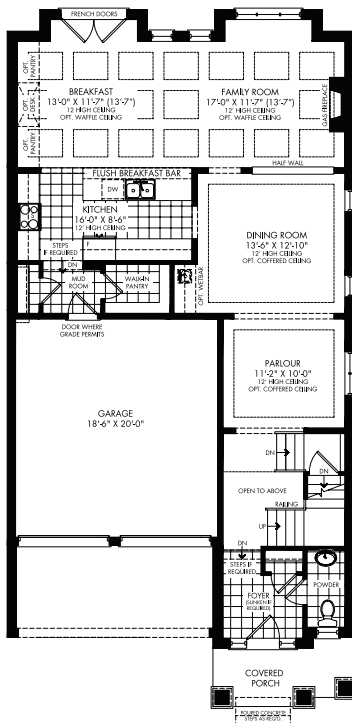
## SALES CONTACT

**905-770-7002**

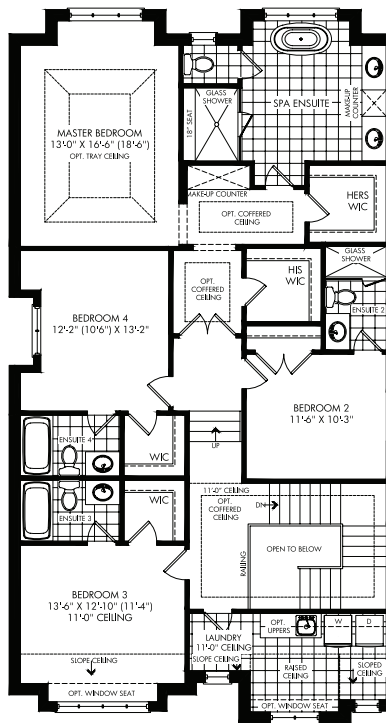
[joshuacreek@primont.com](mailto:joshuacreek@primont.com)

**Book Your  
Appointment Now**

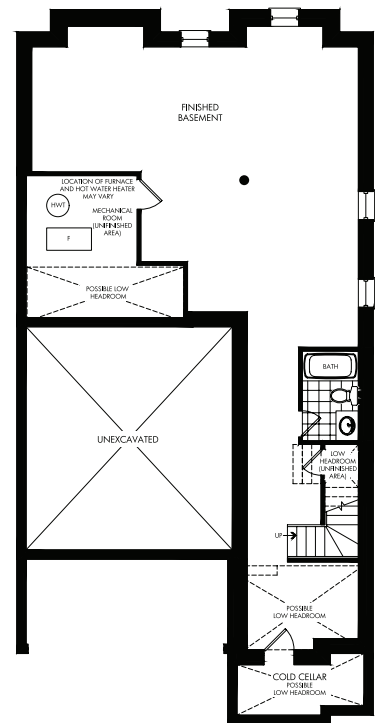
### GROUND FLOOR



### SECOND FLOOR



### FINISHED BASEMENT



#### Disclaimer

Prices, sizes and specifications are subject to change without notice. H.S.T. is included in the purchase price. All areas and stated room dimensions are approximate only. The developer reserves the right to change or remove an incentive or price without notice. Please speak to a sales representative for details E.&O.E March 27, 2025

**primont**





JOSHUA CREEK  
MONTAGE



**pri  
mont**

# JOSHUA CREEK MONTAGE

## 1373 LOON LANE LOT 124

 **BED 4**  **BATH 3.5**

 **SQ. FT 2756+928**

 **PRICE \$1,899,990**

**JC-36-04 C  
FINISHED BASEMENT**

- Peninsula kitchen with grey stone countertop
- Upgraded kitchen faucet
- Large pantry for added storage space
- Wrought iron staircase with stained treads
- Finished basement with cold cellar, and large windows

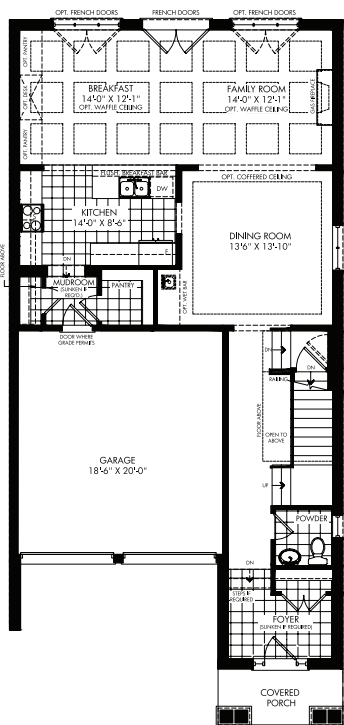
## SALES CONTACT

**905-770-7002**

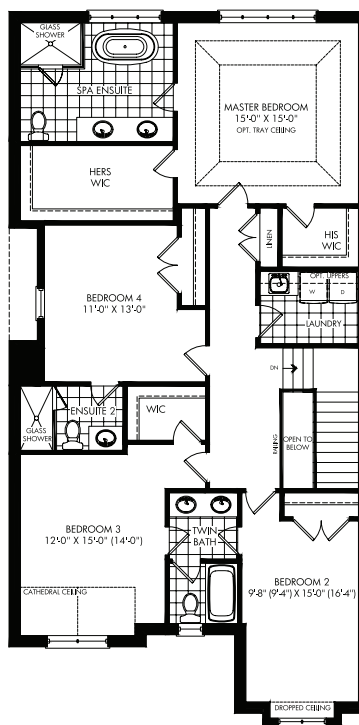
[joshuacreek@primont.com](mailto:joshuacreek@primont.com)

**Book Your  
Appointment Now**

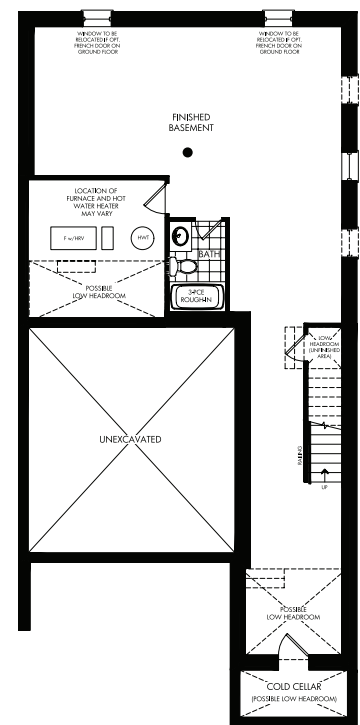
**GROUND FLOOR**



**SECOND FLOOR**



**FINISHED BASEMENT**



### Disclaimer

Prices, sizes and specifications are subject to change without notice. H.S.T. is included in the purchase price. All areas and stated room dimensions are approximate only. The developer reserves the right to change or remove an incentive or price without notice. Please speak to a sales representative for details E.&O.E March 27, 2025

**primont**

# JOSHUA CREEK MONTAGE

## 1370 LOON LANE LOT 125

**BED 4** **BATH 3.5**

**SQ. FT 2761**

**PRICE \$1,809,990**

JC-36-04 B

- Natural oak hardwood on main floor
- Upgraded peninsula kitchen with stone countertop and white cabinets
- Ensuite with glass shower, soaker tub, stone vanity
- Elegant staircase with iron pickets

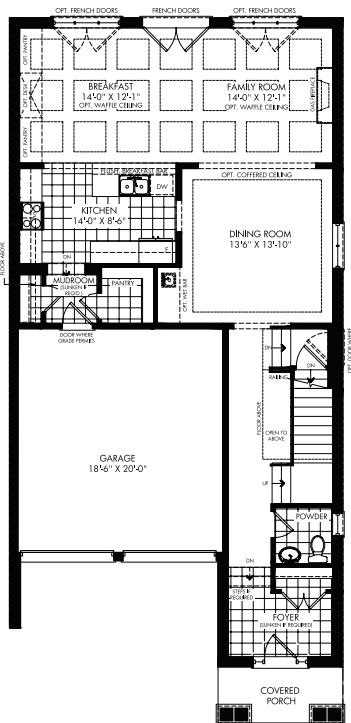
## SALES CONTACT

905-770-7002

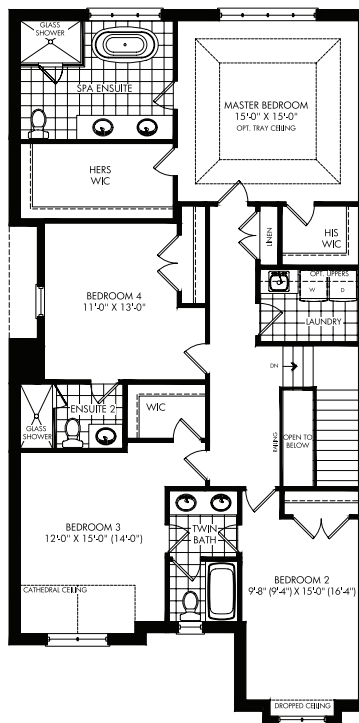
[joshuacreek@primont.com](mailto:joshuacreek@primont.com)

**Book Your  
Appointment Now**

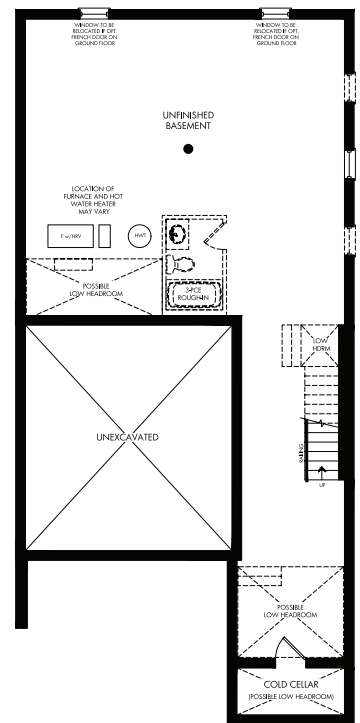
### GROUND FLOOR



### SECOND FLOOR



### BASEMENT



#### Disclaimer

Prices, sizes and specifications are subject to change without notice. H.S.T. is included in the purchase price. All areas and stated room dimensions are approximate only. The developer reserves the right to change or remove an incentive or price without notice. Please speak to a sales representative for details E.&O.E March 27, 2025

**primont**

# JOSHUA CREEK MONTAGE



## 1366 LOON LANE LOT 126

**BED 4** **BATH 3.5**

**SQ. FT 2615**

**PRICE \$1,789,990**

JC-36-03-B

- Island kitchen with stone countertops, large pantry
- Eat-in kitchen with large window
- Double-sided fireplace adds cozy sophistication
- Ensuite with stone vanity, glass shower, soaker tub
- Elegant staircase with iron pickets

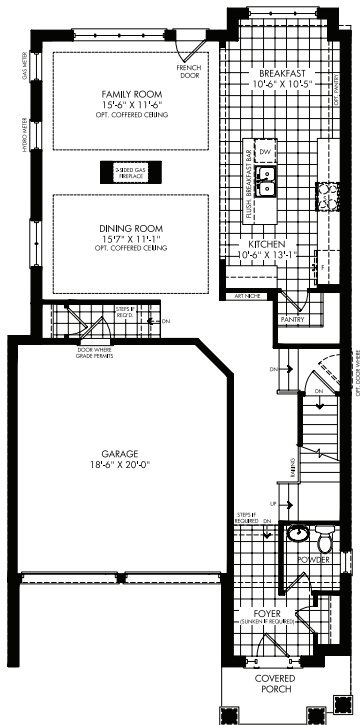
## SALES CONTACT

905-770-7002

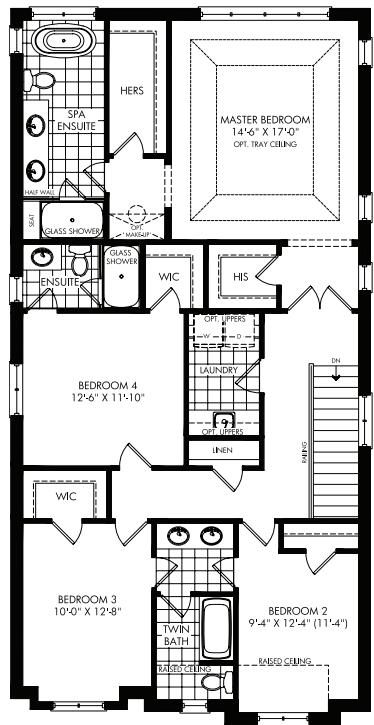
[joshuacreek@primont.com](mailto:joshuacreek@primont.com)

**Book Your  
Appointment Now**

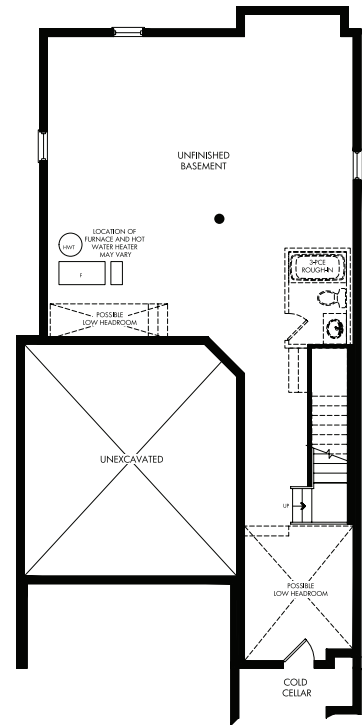
### GROUND FLOOR



### SECOND FLOOR



### BASEMENT



#### Disclaimer

Prices, sizes and specifications are subject to change without notice. H.S.T. is included in the purchase price. All areas and stated room dimensions are approximate only. The developer reserves the right to change or remove an incentive or price without notice. Please speak to a sales representative for details E.&O.E March 27, 2025

**primont**

# JOSHUA CREEK MONTAGE



## 1354 LOON LANE LOT 129

**BED 4** **BATH 3.5**

**SQ. FT 2756**

**PRICE \$1,819,990**

JC-36-04-C

- Dark-stained hardwood on main floor
- Cream-toned peninsula kitchen with stone countertops,
- Wrought iron railings on staircase
- French doors to the backyard

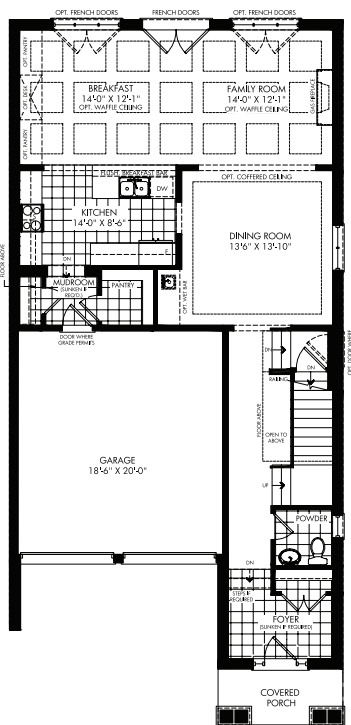
## SALES CONTACT

905-770-7002

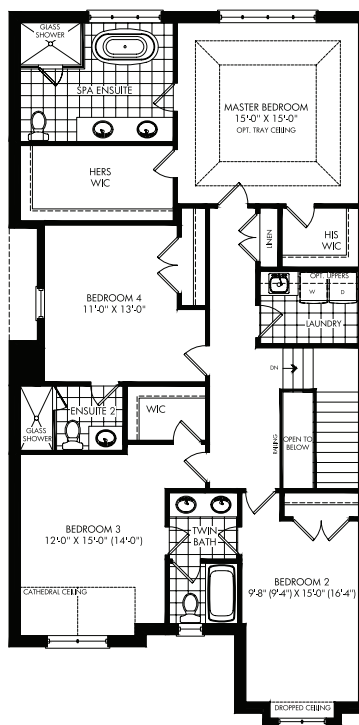
[joshuacreek@primont.com](mailto:joshuacreek@primont.com)

**Book Your  
Appointment Now**

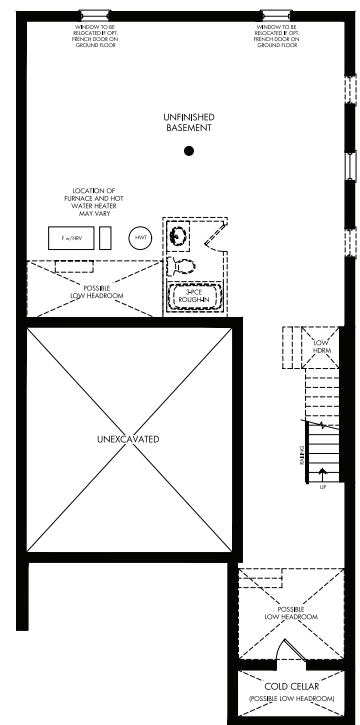
### GROUND FLOOR



### SECOND FLOOR



### BASEMENT



#### Disclaimer

Prices, sizes and specifications are subject to change without notice. H.S.T. is included in the purchase price. All areas and stated room dimensions are approximate only. The developer reserves the right to change or remove an incentive or price without notice. Please speak to a sales representative for details E.&O.E March 27, 2025

**primont**



**JOSHUA CREEK**  
MONTAGE

**1339 PEONY PATH LO**



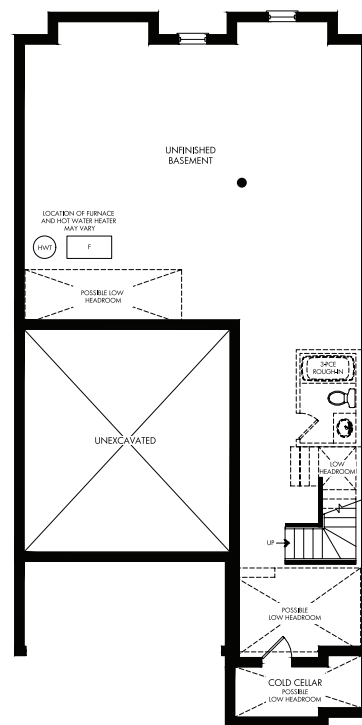
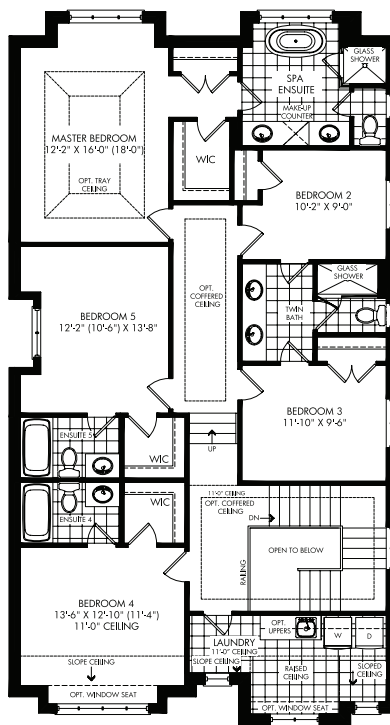
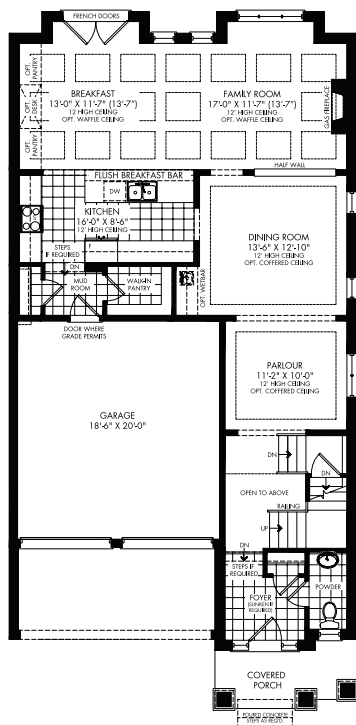
PRICE \$1,929,990

- Stylish white kitchen with peninsula and stone countertops
- Hardwood flooring on main floor
- Frameless shower, stone vanity, large walk-in closet
- Spacious laundry with oversized window
- Formal dining room

[joshuacreek@primont.com](mailto:joshuacreek@primont.com)

**Book Your  
Appointment Now**

BASEMENT



Prices, sizes and specifications are subject to change without notice. H.S.T. is included in the purchase price. All areas and stated room dimensions are approximate only. The developer reserves the right to change or remove an incentive or price without notice. Please speak to a sales representative for details E&O.E March 27, 2025

**pri  
mont**



JOSHUA CREEK  
MONTAGE

1355 PEONY PATH LO









 PRICE **\$1,929,990**

- Dark kitchen with upgraded stone and backsplash
- Light oak Hardwood floors and soaring ceilings
- Luxe ensuite with soaker tub, glass shower
- Formal dining room
- Spacious laundry room with oversized window

[joshuacreek@primont.com](mailto:joshuacreek@primont.com)

**Book Your  
Appointment Now**

[illegible]

MASTER BEDROOM  
12'2" X 16'0" (18'0")  
OPT. TRAY CEILING

SPA ENSUITE  
JACUZZI  
COUNTER  
GLASS SHOWER

WIC

BEDROOM 2  
10'2" X 9'0"

BEDROOM 5  
12'2" (10'6") X 13'8"

OPT. COFFERED CEILING

TWIN BATH  
GLASS SHOWER

BEDROOM 3  
11'10" X 9'6"

UP

DOWN

OPEN TO BELOW

BEDROOM 4  
13'6" X 12'10" (11'14")  
11'10" CEILING  
OPT. WINDOW SEAT

INSUITE  
WIC

WIC

LAUNDRY  
OPT. UPPER CEILING  
OPT. LOWER CEILING  
OPT. WINDOW SEAT

W

D

SCOPED CEILING

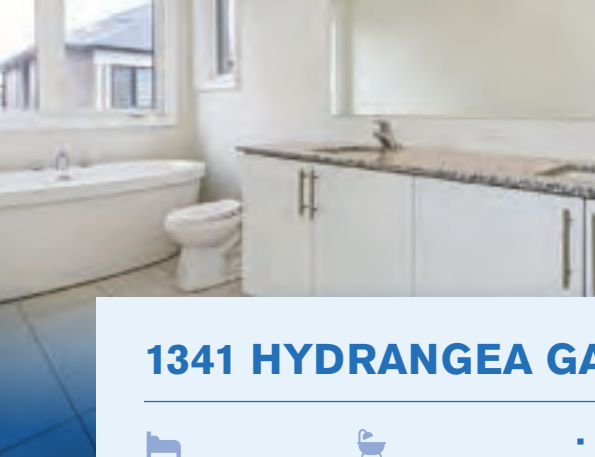
SCOPED CEILING

[illegible]

Prices, sizes and specifications are subject to change without notice. H.S.T. is included in the purchase price. All areas and stated room dimensions are approximate only. The developer reserves the right to change or remove an incentive or price without notice. Please speak to a sales representative for details E.&O.E March 27, 2025

**pri  
mont**

# JOSHUA CREEK MONTAGE



## 1341 HYDRANGEA GARDENS LOT 167

**BED 4** **BATH 3.5**

**SQ. FT 2602**

**PRICE \$1,799,990**

JC-36-03-C

- Natural oak hardwood flooring
- Wrought iron pickets on staircase
- Double-sided fireplace to add warmth to the living room and dining room
- Eat-in kitchen with a large window with a view to the backyard

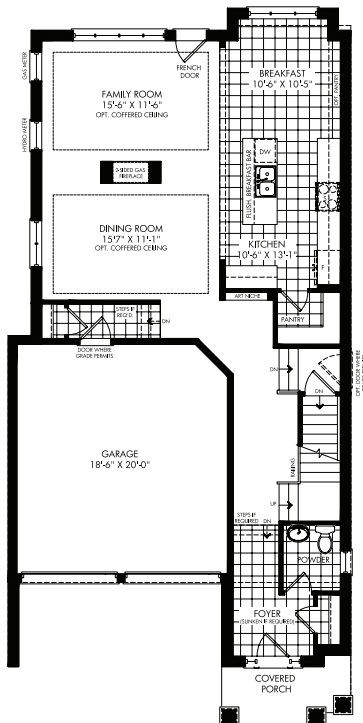
### SALES CONTACT

905-770-7002

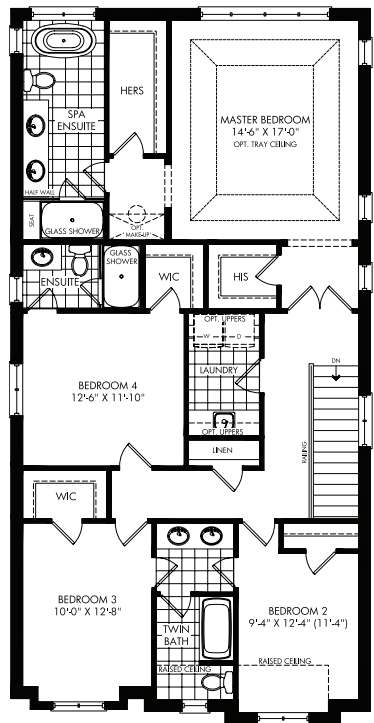
[joshuacreek@primont.com](mailto:joshuacreek@primont.com)

**Book Your  
Appointment Now**

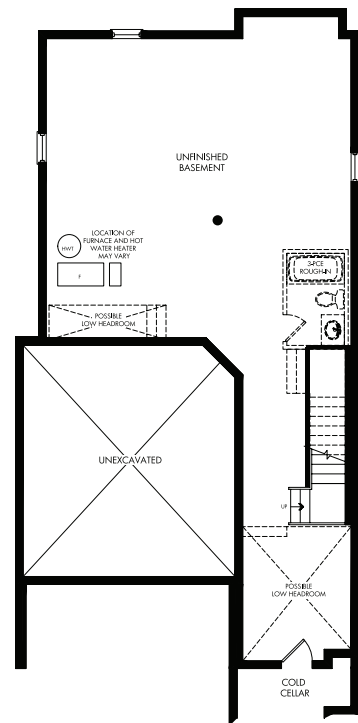
### GROUND FLOOR



### SECOND FLOOR



### BASEMENT



#### Disclaimer

Prices, sizes and specifications are subject to change without notice. H.S.T. is included in the purchase price. All areas and stated room dimensions are approximate only. The developer reserves the right to change or remove an incentive or price without notice. Please speak to a sales representative for details E.&O.E March 27, 2025

**primont**

# JOSHUA CREEK MONTAGE

## 3062, 3064, 3066 PERKINS WAY, OAKVILLE

B206-04

BLOCK 206 TH4, TH5

BED 4 BATH 3 (FULL)  
1 (HALF)  
SQ. FT 1,911  
PRICE \$1,199,990

RTL-01 A

BLOCK 206 TH6

BED 4 BATH 3 (FULL)  
1 (HALF)  
SQ. FT 1,956  
PRICE \$1,229,990

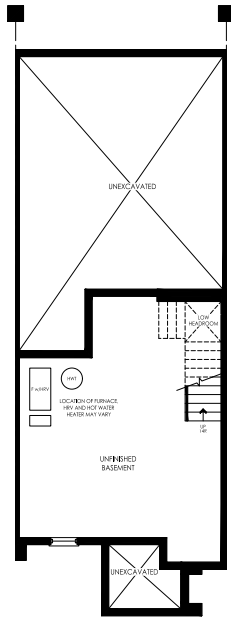
RTL-01 A END

## SALES CONTACT

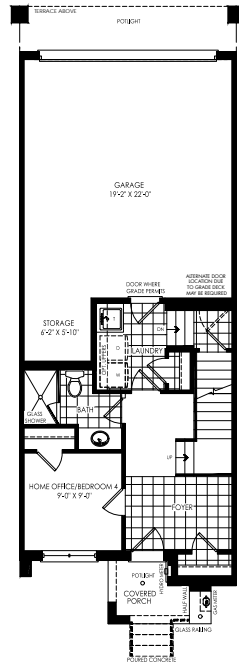
647-248-7469

[joshuacreek@primont.com](mailto:joshuacreek@primont.com)

Book Your Appointment Now



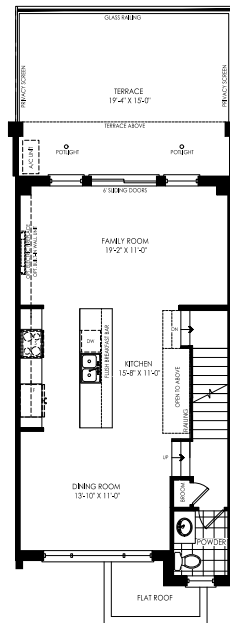
BASEMENT FLOOR



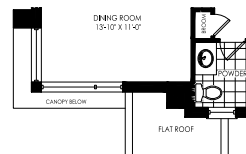
GROUND FLOOR



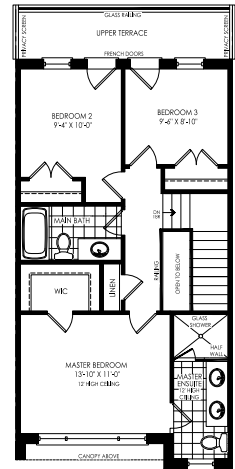
GROUND FLOOR END



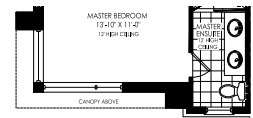
MAIN FLOOR



MAIN FLOOR END



THIRD FLOOR



THIRD FLOOR END

Prices, sizes and specifications are subject to change without notice. H.S.T. is included in the purchase price. All areas and stated room dimensions are approximate only. The developer reserves the right to change or remove an incentive or price without notice. Please speak to a sales representative for details E.&O.E Aug, 2025

primont

# JOSHUA CREEK MONTAGE

## 3072, 3074, 3076, 3070 PERKINS WAY, OAKVILLE

B207-02

BLOCK 207 TH2, TH3, TH4

BED 4 BATH 3 (FULL)  
1 (HALF)  
SQ. FT 2,104  
PRICE \$1,239,990

RLT-02 A

BLOCK 207 TH1

BED 4 BATH 3 (FULL)  
1 (HALF)  
SQ. FT 2,173  
PRICE \$1,269,990

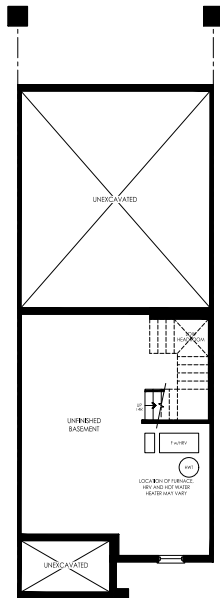
RLT-02 END A

## SALES CONTACT

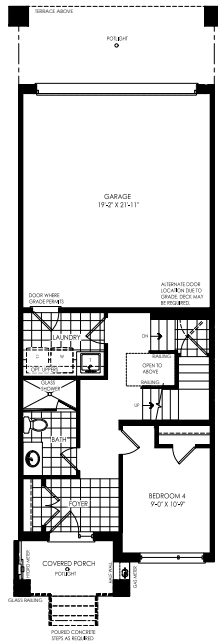
647-248-7469

[joshuacreek@primont.com](mailto:joshuacreek@primont.com)

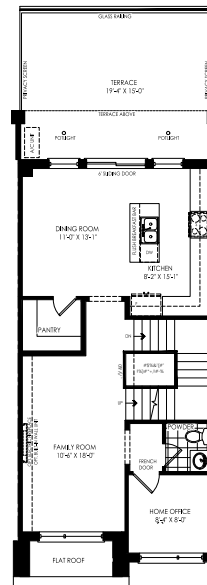
Book Your Appointment Now



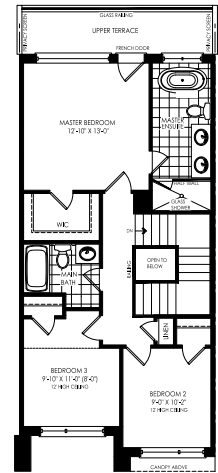
BASEMENT FLOOR



GROUND FLOOR



MAIN FLOOR



THIRD FLOOR

GROUND FLOOR END

MAIN FLOOR END

THIRD FLOOR END

Prices, sizes and specifications are subject to change without notice. H.S.T. is included in the purchase price. All areas and stated room dimensions are approximate only. The developer reserves the right to change or remove an incentive or price without notice. Please speak to a sales representative for details E.&O.E Aug, 2025

primont

# JOSHUA CREEK MONTAGE

**3071, 3069, 3067, 3065, 3063, 3139, 3084  
MEADOWRIDGE DR, OAKVILLE**

**B216-06**

**BLOCK 216 TH2, TH3, TH4, TH5  
BLOCK 199 TH3**

**BLOCK 216 TH6  
BLOCK 266 TH4**

**BED 4** **BATH** **3 (FULL)**  
**1 (HALF)**  
**SQ. FT 2,360**  
**PRICE \$1,279,990**

**RLT-03 A2**

**BED 4** **BATH** **3 (FULL)**  
**1 (HALF)**  
**SQ. FT 2,416**  
**PRICE \$1,309,990**

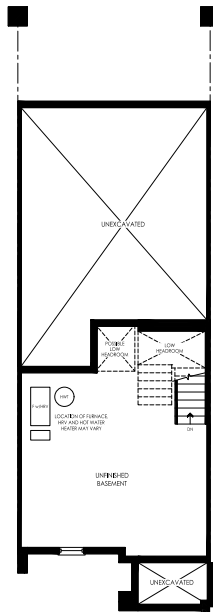
**RLT-03 END A2**

## SALES CONTACT

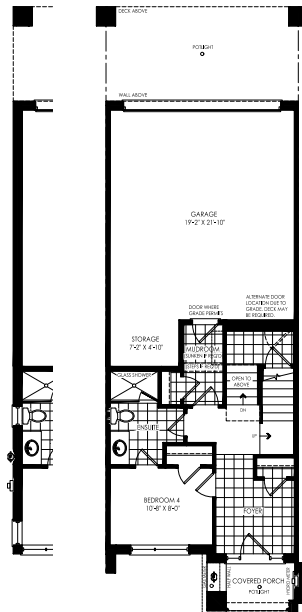
**647-248-7469**

[joshuacreek@primont.com](mailto:joshuacreek@primont.com)

**Book Your Appointment Now**

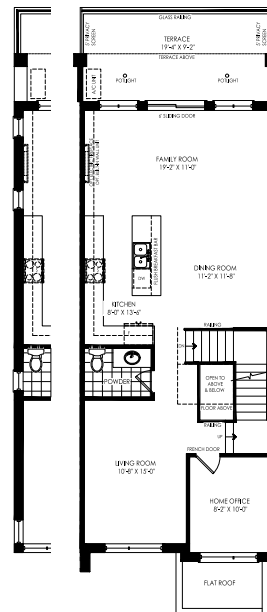


**BASEMENT FLOOR**



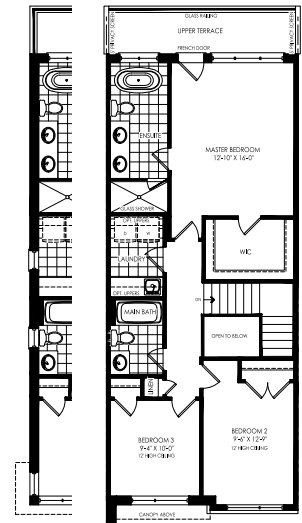
**GROUND FLOOR**

**GROUND FLOOR END**



**MAIN FLOOR**

**MAIN FLOOR END**



**THIRD FLOOR**

**THIRD FLOOR END**

Prices, sizes and specifications are subject to change without notice. H.S.T. is included in the purchase price. All areas and stated room dimensions are approximate only. The developer reserves the right to change or remove an incentive or price without notice. Please speak to a sales representative for details E.&O.E Aug, 2025

**primont**

# JOSHUA CREEK MONTAGE

**1334 ANTHONIA TRAIL, OAKVILLE**  
**3040 PERKINS WAY, OAKVILLE**

**B206-01**

**BLOCK 216 TH1, BLOCK 220 TH3**

**BED 5** **BATH 1** **4 (FULL)**  
**1 (HALF)**

**SQ. FT 2,548**

**PRICE \$1,349,990**

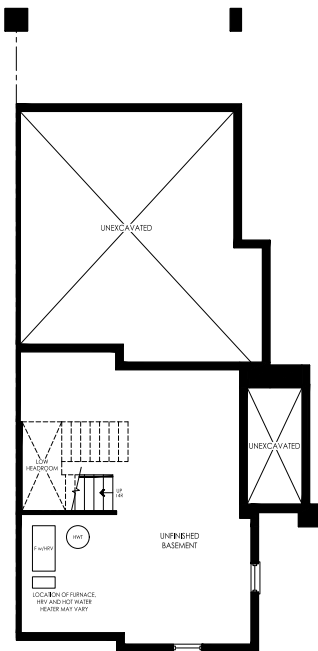
**RLT-04 CORNER A2**

## SALES CONTACT

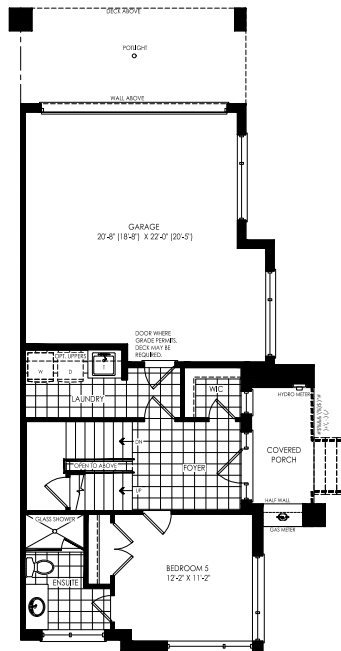
**647-248-7469**

[joshuacreek@primont.com](mailto:joshuacreek@primont.com)

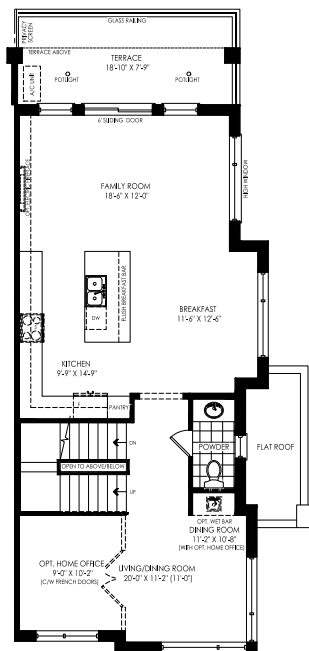
**Book Your Appointment Now**



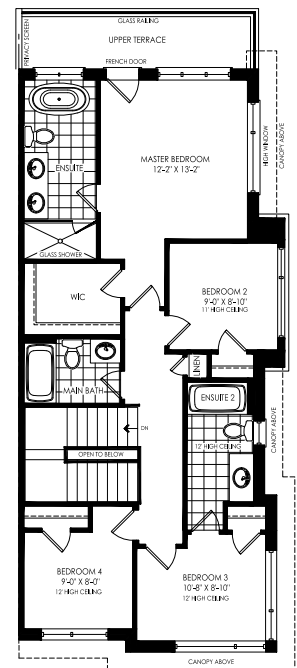
**BASEMENT FLOOR**



**GROUND FLOOR**



**MAIN FLOOR**



**THIRD FLOOR**

Prices, sizes and specifications are subject to change without notice. H.S.T. is included in the purchase price. All areas and stated room dimensions are approximate only. The developer reserves the right to change or remove an incentive or price without notice. Please speak to a sales representative for details E.&O.E Aug, 2025

**primont**

# JOSHUA CREEK MONTAGE

**3033 MEADOWRIDGE DR, OAKVILLE**

**B219-02**

**BLOCK 219 TH2**

**BED 4** **BATH 3** (FULL)  
1 (HALF)

**SQ. FT 2,634**

**PRICE \$1,369,990**

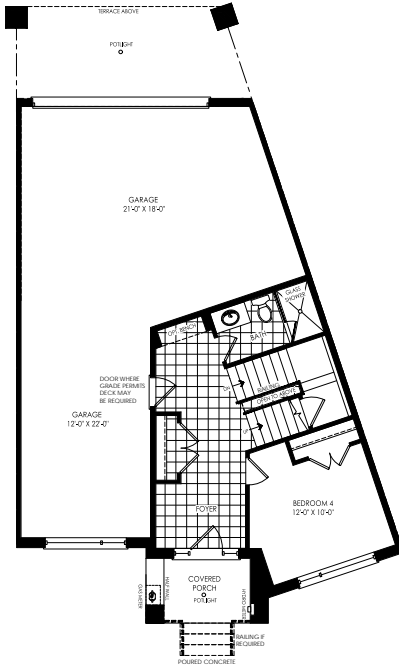
**RLT-05 A**

## SALES CONTACT

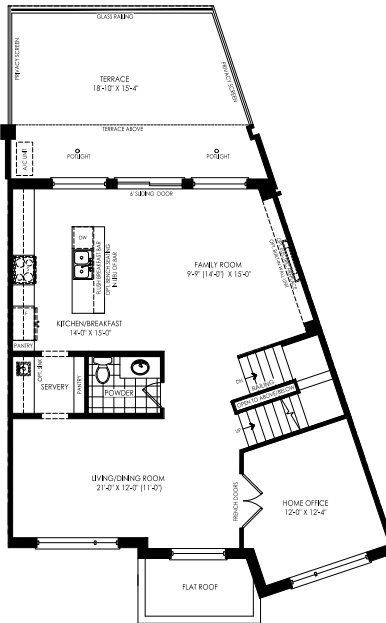
**647-248-7469**

[joshuacreek@primont.com](mailto:joshuacreek@primont.com)

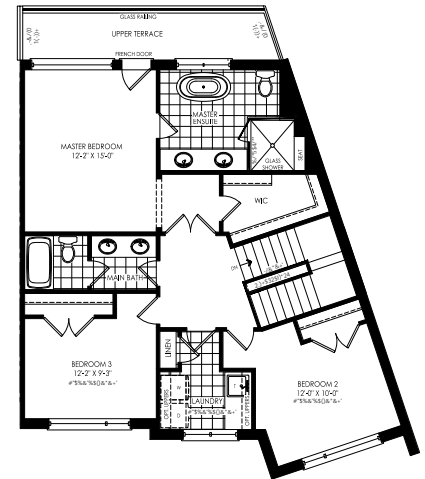
**Book Your Appointment Now**



**GROUND FLOOR**



**MAIN FLOOR**



**THIRD FLOOR**

Prices, sizes and specifications are subject to change without notice. H.S.T. is included in the purchase price. All areas and stated room dimensions are approximate only. The developer reserves the right to change or remove an incentive or price without notice. Please speak to a sales representative for details E.&O.E Aug, 2025

**primont**